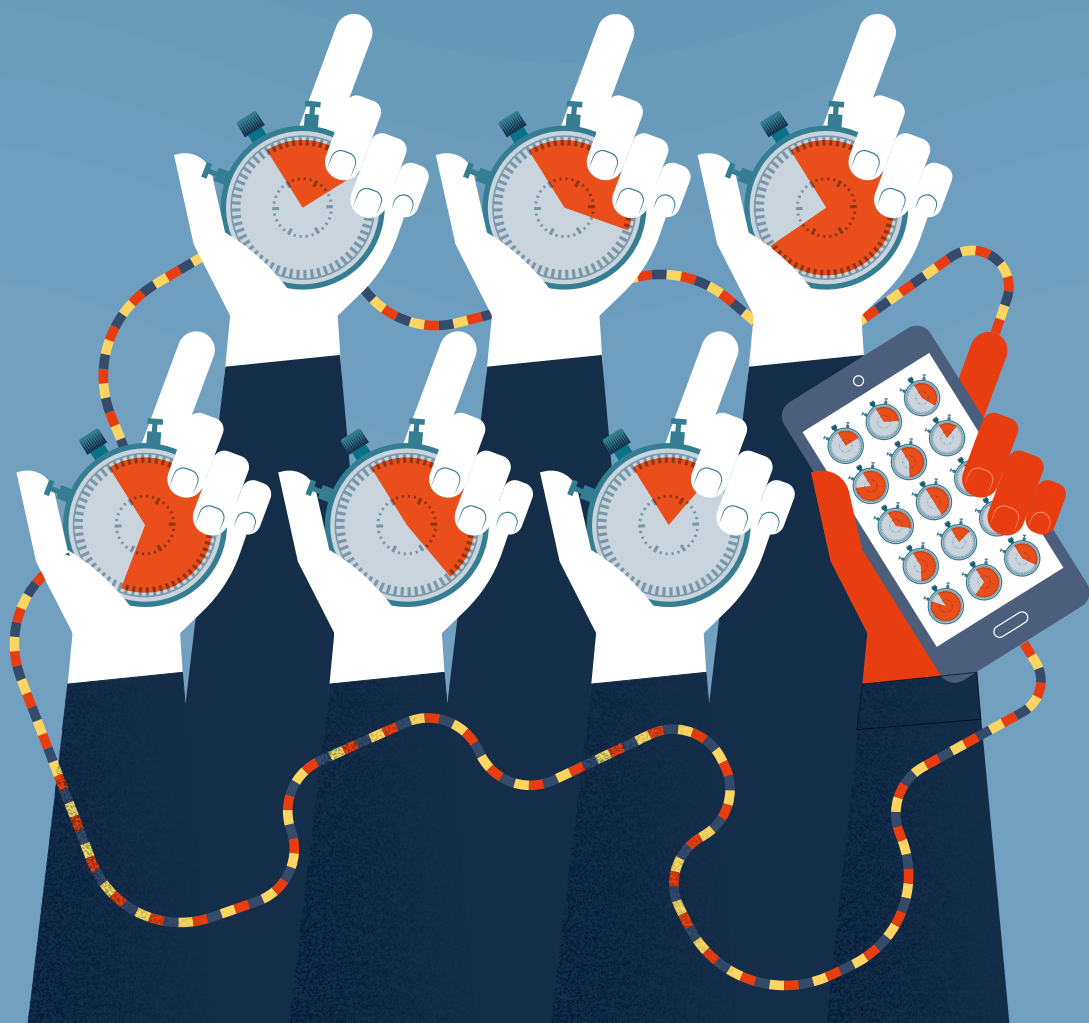


MODERNISATION OF TIME USE DATA COLLECTION IN EU MEMBER STATES

THE
BELGIAN
CASE



1. WHY MODERNISE THE DATA COLLECTION FOR HARMONISED EUROPEAN TIME USE SURVEYS (HETUS)?

The Wiesbaden Memorandum (DGINS 2011) states the need for better information on time use and household budgets in terms of coverage and comparability, and aims to achieve this by:

- implementing new possibilities that improve the responsiveness of users
- linking the HETUS data collection with other data sources
- taking into account new technological developments

Solutions should reduce the burden on EU Member States and help NSIs complete the surveys and process the incoming data.

Against this background, Eurostat started a project enabling Member States to develop innovative tools and sources for diary-based surveys and which can be shared with other countries within the scope of ESS.

Time Use Survey (TUS)

For each activity, and in chronological order, respondents report the starting and finishing time as well as important contextual information like the place of occurrence and the possible presence of others. Consequently, the micro-behavioural structure of time diary data provides an overview of contextualised experiences of how people live their daily lives and how social connectedness, e.g. through family, work, school and associations, structure their time allocation.

Since 2004, the HETUS-guidelines have been used for data collection. This has resulted in highly comparable and valuable international data that are being employed within a wide range of study domains, such as paid work, unpaid work, gender equality and leisure. To date, three rounds of data collection have been organised.

A disadvantage is that these data collections are mainly paper-and-pencil based, which negatively affects budget costs and response rates, and increases respondent burden.

2. THE BELGIAN CASE

The SOURCE™ project, executed by Statbel, aims to modernise their data collection process, from data collection to data processing through to data dissemination. To do so, the project uses the MOTUS platform developed by the Research Group TOR of the Vrije Universiteit Brussel.

SOURCE™ project objectives

The project brings together Statbel and Destatis to evaluate how the MOTUS platform is helpful in modernising their way of statistical production. The project will document how the MOTUS platform can be encapsulated within their software architecture, and that of other NSI's. In total, the project involves four objectives.

Objective 1

Software Outreach - Sharing knowledge about MOTUS via CSPA compliant documentation and options to implement in other software architectures. This will support shareability of MOTUS in the ESS.

Objective 2

Redefinition - Mapping of the content and the technical requirements, to support shareability and reusability.

Objective 3

Collect - Setting up a modular collection strategy with a focus on governmental practices, panel invitation and the household level. These experiences will support MOTUS to become ESS-shareable.

Objective 4

E-data – Moving towards a harmonised approach to support ESS shareability of MOTUS: pilot test and dissemination.



MOTUS - Modular Online Time Use Survey

MOTUS is a highly configurable software platform for survey data collections. It can be used for projects of any scale and for any given fieldwork period. All projects start from the same principle: understanding human behaviour implies capturing and analysing people’s activities in the context in which they occur. This gives a comprehensive narrative of daily human behaviour, which allows daily life in general or in more detail (detailed activities and subgroups) to be studied.

The platform assures comparability, reliability and quality of the data. Its true strength lies within the modularity of the back-office, as every research component can be (re)defined within the MOTUS platform itself. In doing so, Statbel can design survey questionnaires, time diaries, activity-based questionnaires, and communication strategies. Next, all research elements can be combined into an automated flow. Once configured, the research flow runs automatically, including communication with respondents. The fieldwork can be followed up on and the collected data processed in a user-friendly way.

MOTUS-app: front-office

In execution modus, respondents report their daily activities via the MOTUS application that can be installed on any type of smartphone or tablet and can also be accessed through conventional web-browsers. All data is synchronised. Retrieving respondent data via sensors or wearables is a logical next step. A benefit of this would be that, through notifications, the respondent could be asked to provide more information, and so more context, to an activity.



Abbreviations:

Statbel: Statistics Belgium

Destatis: Statistisches Bundesamt

VUB: Vrije Universiteit Brussels

TOR: Tempus Omnia Revelat: Time Reveals Everything

HETUS: Harmonised European Time Use Survey

ESS: European Statistical System

CSPA: Common Statistical Production Architecture

GSBPM: Generic Statistical Business Process Model

GSIM: Generic Statistical Information Model

TUS: Time Use Survey

HBS: Household Budget Survey

IATUR: International Association for Time Use Research

MOTUS: Modular Online Time Use Survey

SOURCE™: Software Outreach and Redefinition to Collect E-data Through MOTUS, is a project coordinated by Statbel, in cooperation with Destatis and VUB and with financial support from Eurostat

Organisations:

Statistics Belgium:

<http://www.statbel.fgov.be>

Statistisches Bundesamt:

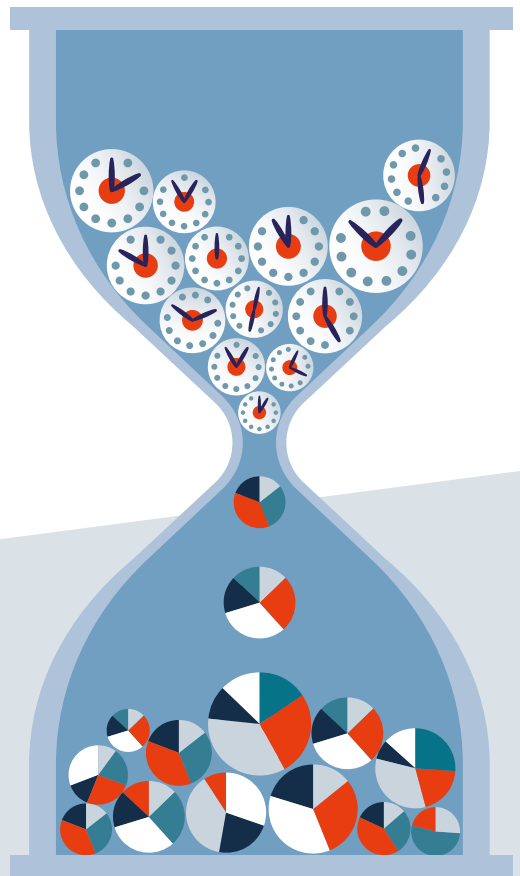
<https://www.destatis.de/EN/Homepage.html>

**Vrije Universiteit Brussels -
Research Group TOR:**

<http://www.vub.ac.be/TOR>

Eurostat:

<https://ec.europa.eu/eurostat/>



Publications Office
of the European Union

Printed in Luxembourg by the Publication Office
© European Union, 2019

PDF:
KS-01-19-066-EN-N
ISBN 978-92-79-99545-3
doi:10.2785/223529

Print:
KS-01-19-066-EN-C
ISBN 978-92-79-99546-0
doi:10.2785/159007